

# Quality of Lifelong Guidance for International Mobility

**Information, advice and guidance in the future**

**Tarja Koskinen, Programme Manager, Euroguidance Finland**

**Centre for International Mobility CIMO**



# What is Lifelong Guidance?

Lifelong guidance has been defined by the European Council (2004, 2008) as

`a continuous process that enables citizens at any age and at any point in their lives to identify their capacities, competences and interests, to make educational, training and occupational decisions, and to manage their individual life paths in learning, work and other settings in which those capacities and competences are learned and/or used`.

`It supports citizens' transitions including for internal and transnational mobility for learning and work`.

# Lifelong Guidance, dimensions

Guidelines for Lifelong Guidance Policies and Systems for (ELGPN Tools, 2016)

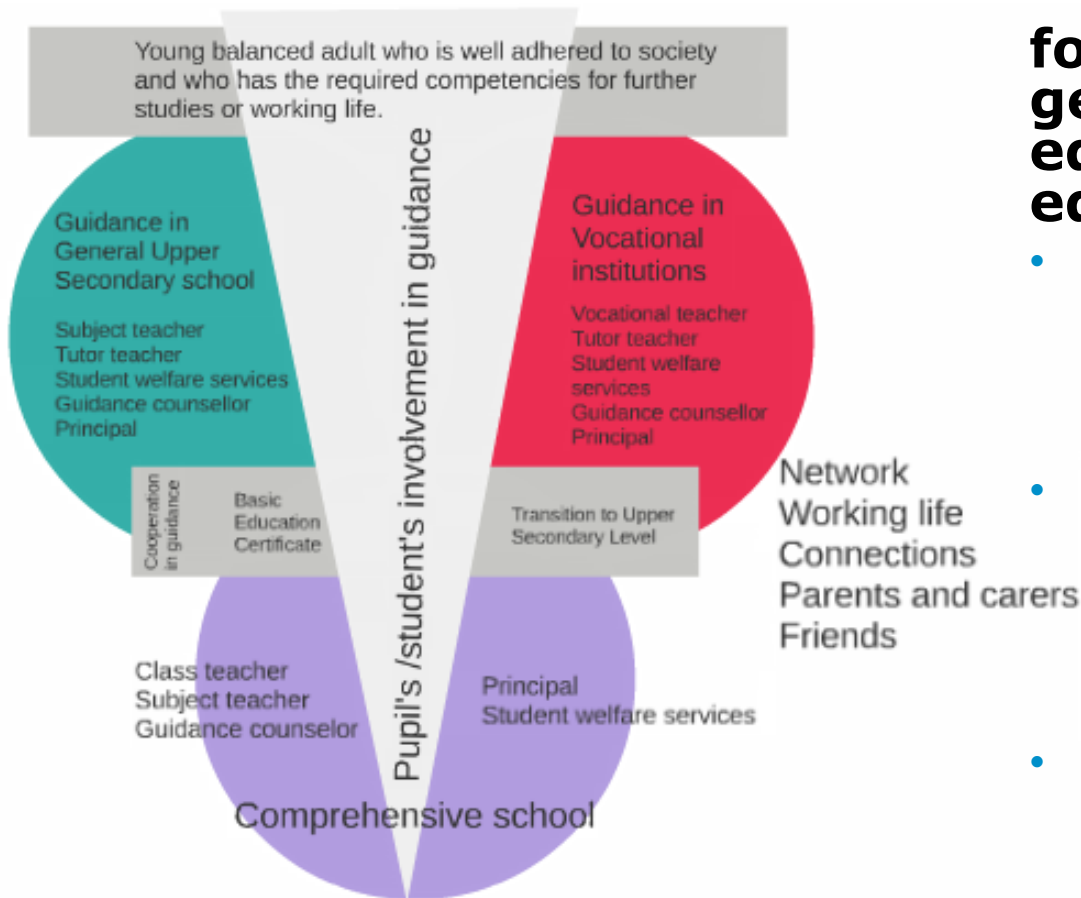
- **Education and Training Sector**
- Employment and Third Age Sectors
- Groups at Risk

Quality elements

- **Control of staff expertise** professional standards
- **User involvement** availability of guidance services and products for individuals
- **Services and their development**
- **Cost Benefits to society**
- **Cost-benefit citizens**

Mika Launikari, 2016

# Criteria for good guidance



## for basic education, general upper secondary education and vocational education in Finland

- is a continuous, interactive and goal-oriented activity for supporting learning, growth and development of pupils and students.
- Each pupil and student is respected as an individual, who has the right to receive high-quality guidance in a manner that sufficiently meets his or her needs.
- Pupils and students are active agents in guidance.

Finnish National Board of Education 2014

# Themes for Good Guidance

**Sufficient and multifaceted guidance**

**Supporting activity, participation and responsibility**

**Guidance is a shared task**

**Skilled and professional personnel**

**Interactive cooperation**

**Promoting equality and equity**

**Guidance plan**

**Educational transition points**

**Supporting decision making on educational and career choices**

**Working life skills and introduction to working life**

**Providing information on guidance services**

**Criteria for good guidance as part of a local quality management system**

# Time to think

1. What do you think are three (3) most important criteria for good guidance concerning international mobility?
2. Find a pair. Have a short conversation and make a joint decision about three (3) most important criteria for good guidance concerning international mobility.
3. With your pair find an other pair. Have a short conversation and make a joint decision about three (3) most important criteria for good guidance concerning international mobility.

# Mutual criteria

4. ... for good guidance concerning international mobility.

Group	CRITERIA
1	
2	
3	
4	
5	
6	
7	
8	
9	
10	

# Evaluation

5. How are these criteria realised and managed in your country and in your work?

Criteria:	Allways	Most of the time	Often	Seldom	Hardly at all
1					
2					
3					
4					
5					
6					
7					
8					
9					
10					



# "Home assignment"

Find out ways how you can influence to make guidance better concerning international mobility.



**Tarja Koskinen**  
**Centre for International Mobility CIMO**  
**Manager of Euroguidance Finland**